



 **clyde**  
PROPERTY

[clydeproperty.co.uk](http://clydeproperty.co.uk)



84 LEWIS PLACE  
PERTH  
PH1 3BE





Situated within the highly popular North Muirton location on the outskirts of Perth City, is this three bedroom, mid terraced, family villa. The property would benefit from upgrading throughout to create a modern family home.





Measuring 84 sqm in total, the bright and spacious accommodation is entered into a central hallway with stairwell to the upper level and under stairs storage cupboard. The kitchen is complete with a range of wall and base units and space for breakfasting table and appliances. The sunny lounge is to the rear and overlooks the enclosed garden area. There is a vestibule and further door to outside located off the lounge. Upstairs there are three bedrooms with the larger two offering fitted storage facilities. The family bathroom with shower over the bath completes the accommodation on offer.



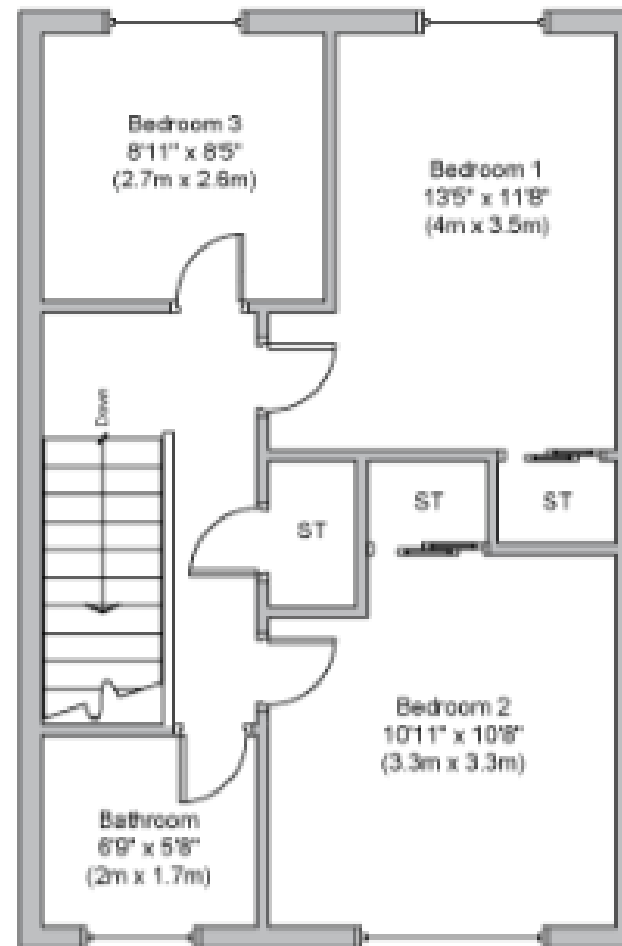
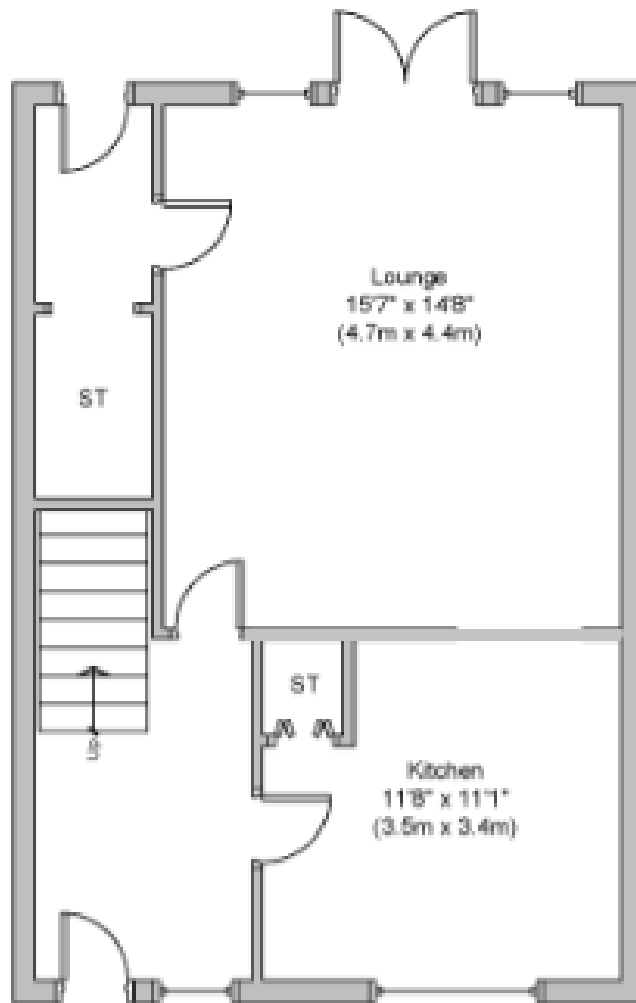
Externally, there is an open lawned garden area to the front and enclosed garden to the rear which is ideal for families and pets. There is on street parking widely available immediately adjacent to the property.



North Muirton offers an excellent range of everyday amenities including shops and both primary and secondary schooling. There are regular bus links to the city centre where a wider range of amenities are on offer along with straightforward transport links connecting Perth with all of Scotland's major cities. Early viewing recommended.







**Please note: all plans are for illustrative purposes only and should not be relied on a statement of fact. Measurements shown are taken from the widest points and areas with curved or angled walls are approximate.**



[clydeproperty.co.uk](http://clydeproperty.co.uk)

To find out more contact Clyde Property Perth: 26 George Street, Perth, Perthshire PH1 5JR T: 01738 507 070 E: [perth@clydeproperty.co.uk](mailto:perth@clydeproperty.co.uk)

