



 **clyde**
PROPERTY

140 NEWHOUSE ROAD
PERTH PH1 2JN

 To view the HD video click here

clydeproperty.co.uk





We are delighted to offer for sale this spacious and well presented mid terraced villa situated on the outskirts of Letham. The property is within easy reach of Perth city centre and all amenities it has to offer serviced by a regular bus route. Accommodation is spread over two levels - the ground floor comprises: Entrance hallway, modern fitted kitchen, large lounge with access to a rear porch and garden and stair to upper level. The first floor houses 2 good sized bedroom both with built in storage and stylish family bathroom. The property also benefits from gas central heating, double glazing and private front and rear gardens. There is off street parking available to the rear of the property. This property would make an ideal first time buy or buy to let investment and viewing is highly recommended.



AT A GLANCE

Two bedroom mid terraced villa

Large lounge

Modern fitted kitchen

Family bathroom

THE FINER DETAIL

Gas central heating

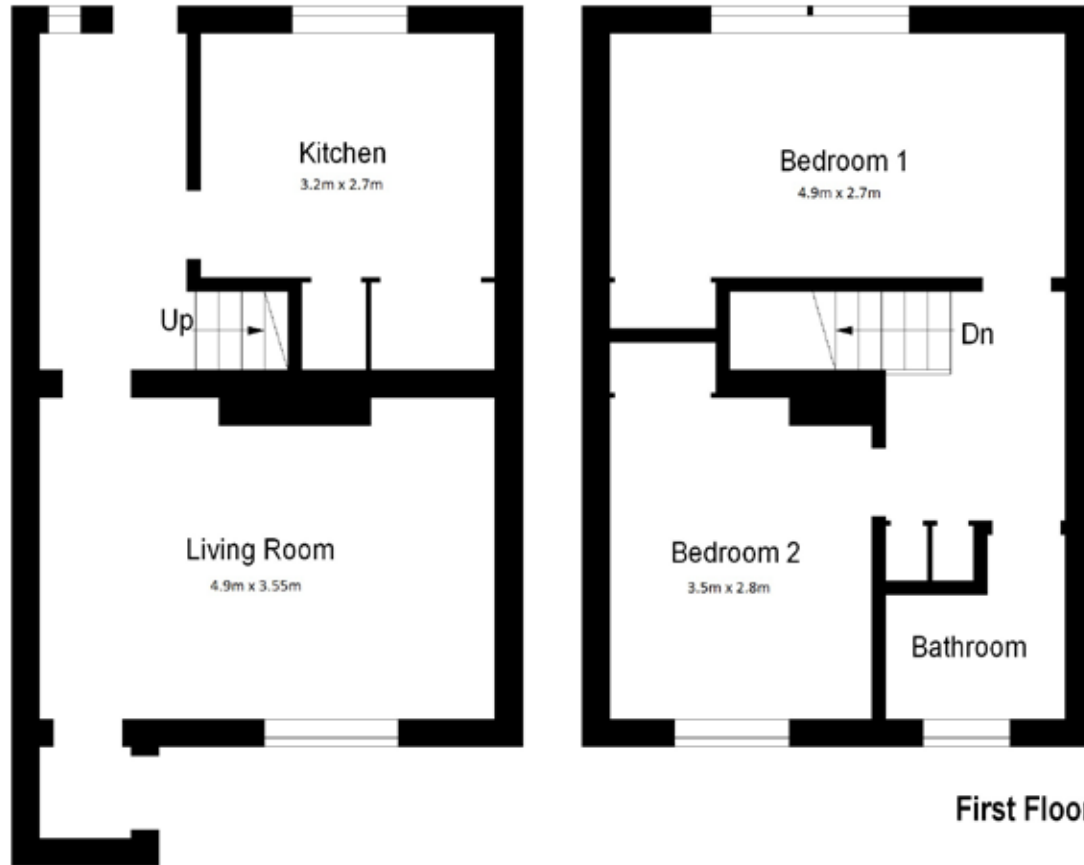
Double glazing

Private front and rear gardens

EPC Band C







140 NEWHOUSE ROAD
PERTH PH1 2JN

Approx gross internal area 796.529 sqft | 74 sqm
Property reference XF1688

Whilst this brochure has been prepared with care, it is not a report on the condition of the property. Its terms are not warranted and do not constitute an offer to sell. All area and room measurements are approximate only. Floorplans are for illustration only and may not be to scale. All measurements are taken from longest and widest points.

Find out more contact Clyde Property Perth: 26 George Street, Perth PH1 5JR. T: 01738 507070 F: 01738 629439 E: perth@clydeproperty.co.uk

