



[▶ To view the HD video click here](#)

THE DEVERON  
STRATHEARN PARK  
BRIDGE OF EARN

[clydeproperty.co.uk](http://clydeproperty.co.uk)





Strathearn Park by Ogilvie Homes is situated in the town of Bridge of Earn and offers a selection of stylish family villas set in beautiful Perthshire countryside.

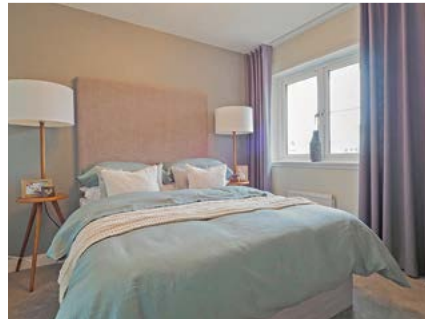
The Deveron is an elegant 4 bedroom detached villa comprising of lounge, kitchen/dining room with French doors to rear garden, utility room, downstairs WC. Upstairs has 4 sizable bedroom, two with en-suites and fitted wardrobes, family bathroom. Single integral garage.

The first phase released consists of 3 & 4 bed detached and semi-detached villas offering generous living space throughout with fitted kitchens including stainless steel electric oven, gas hob, integrated chimney hood and stainless steel splash-back to hob.

Bridge of Earn is located on the east coast just 5 miles from the beautiful city of Perth and has many local amenities including restaurants, local shops, medical centre, parks and walking areas. For all your major high street retailers and unique independent stores along with some excellent nightlife, Perth is just a 10 minute drive away.

All properties come with a 10 year Zurich/NHBC guarantee.

\*\*Photos are for illustrative properties only\*\*







**Ground Floor**

**Lounge**  
4.00 x 4.05m 13.12 x 13.29ft  
**Kitchen / Dining**  
5.15 x 2.90m 16.90 x 9.51ft

**First Floor**

**Bedroom 1**  
2.90 x 3.30m 9.51 x 10.83ft  
**Bedroom 2**  
2.90 x 2.90m 9.51 x 9.51ft  
**Bedroom 3**  
2.75 x 3.55m 9.02 x 11.65ft

**THE DEVERON**  
**STRATHEARN PARK**  
**BRIDGE OF EARN**

Property reference XO1481

Whilst this brochure has been prepared with care, it is not a report on the condition of the property. Its terms are not warranted and do not constitute an offer to sell. All area and room measurements are approximate only. Floorplans are for illustration only and may not be to scale. All measurements are taken from longest and widest points.