



2 MANSFIELD COURT
SCONE PH2 6UR

 To view the HD video click here



Situated in a quiet cul-de-sac in the popular village of Scone, is this self-contained upper floor 2 bedroom apartment. The property is stylish and modern throughout with accommodation comprising of: private stairwell, hallway, Generous lounge affording space for dining, modern fitted kitchen, 2 bedrooms with built-in storage and stylish bathroom. The property is serviced by gas central heating and has double glazing throughout. Externally there is private parking and a communal drying green to the rear. Viewing is highly recommended.

AT A GLANCE

Upper floor two bedroom apartment
Generous lounge
Modern fitted kitchen
Stylish bathroom

THE FINER DETAIL

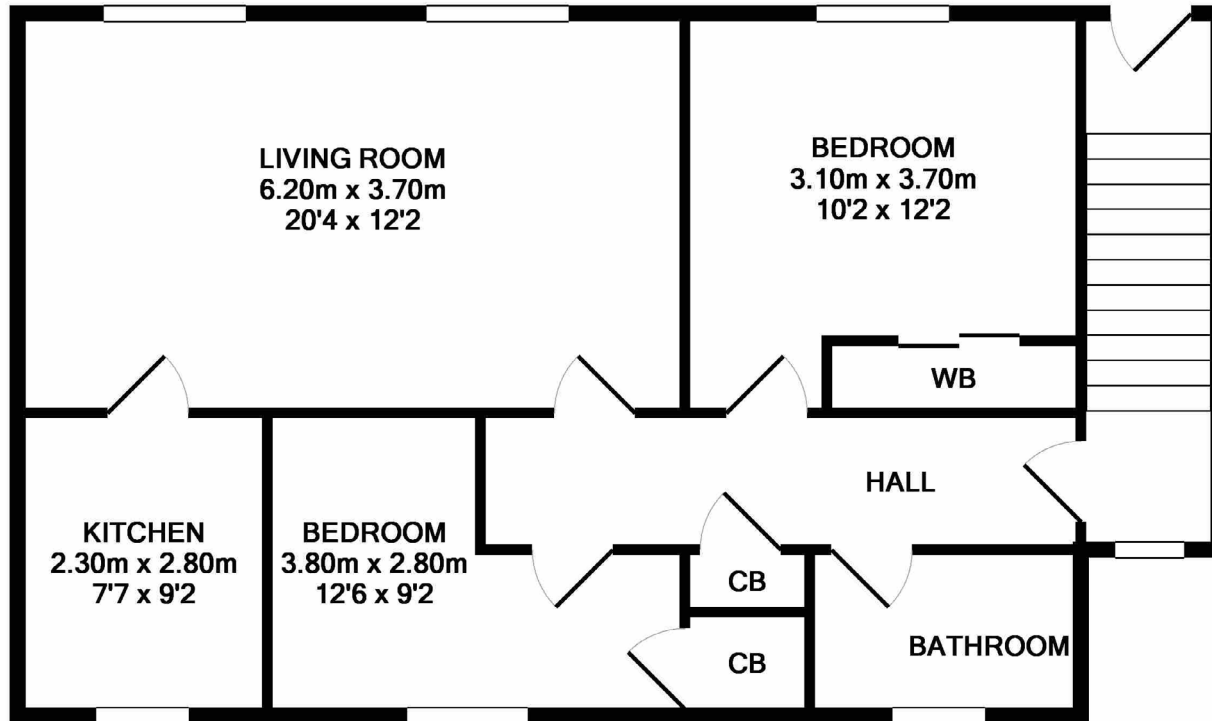
Gas central heating
Double glazing
Private parking
EPC Band C



Connect & Share. View the video in HD, simply download our APP, hover over the cover and see it come to life.







2 MANSFIELD COURT
SCONE PH2 6UR

Approx gross internal area 667.362 sqft | 62 sqm
Property reference XT1618

Whilst this brochure has been prepared with care, it is not a report on the condition of the property. Its terms are not warranted and do not constitute an offer to sell. All area and room measurements are approximate only. Floorplans are for illustration only and may not be to scale. All measurements are taken from longest and widest points.

Find out more contact Clyde Property Perth: 26 George Street, Perth PH1 5JR. T: 01738 507070 F: 01738 629439 E: perth@clydeproperty.co.uk

